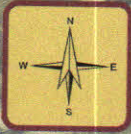


LIMA AREA ROADS DETOUR AND RESTRICTIONS MAP

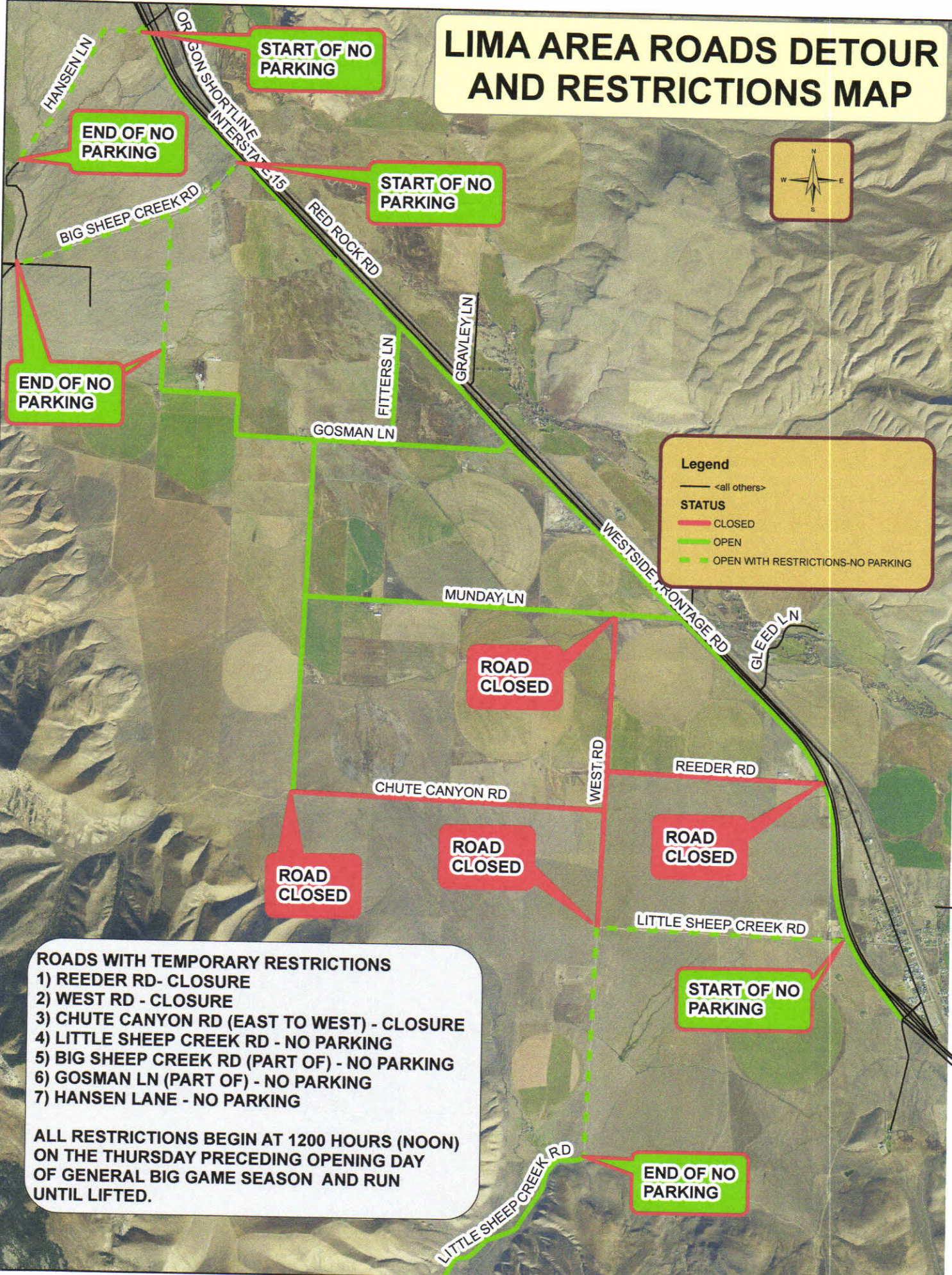


Legend

— <all others>

STATUS

- CLOSED
- OPEN
- - - OPEN WITH RESTRICTIONS-NO PARKING



ROADS WITH TEMPORARY RESTRICTIONS

- 1) REEDER RD - CLOSURE
- 2) WEST RD - CLOSURE
- 3) CHUTE CANYON RD (EAST TO WEST) - CLOSURE
- 4) LITTLE SHEEP CREEK RD - NO PARKING
- 5) BIG SHEEP CREEK RD (PART OF) - NO PARKING
- 6) GOSMAN LN (PART OF) - NO PARKING
- 7) HANSEN LANE - NO PARKING

ALL RESTRICTIONS BEGIN AT 1200 HOURS (NOON) ON THE THURSDAY PRECEDING OPENING DAY OF GENERAL BIG GAME SEASON AND RUN UNTIL LIFTED.