

***THE BEAVERHEAD COUNTY FAIR
BOARD WELCOMES YOU TO THE***



BEAVERHEAD COUNTY FAIR

***THANKS TO ALL OF OUR
EXHIBITORS, SPONSORS AND
CONTRIBUTORS!***

BEAVERHEAD COUNTY FAIR BOARD

Pete Hansen—Chair

Jackie Sutton—Member

Jules Marchessault—Member

Tyler Tintzman—Member

Cathy Konen—Member

Brandon Ferguson—Member

David Schuett—Member

BOARD OF COUNTY COMMISSIONERS

***John Jackson
Chair***

***Mike McGinley
Member***

***Tom Rice
Member***

FAIR MANAGEMENT

***Marvin Burch
Fair Manager
2 S. Pacific, CL #4
Dillon, MT 59725
(620) 617-4602***

***Keeley Fitzgerald
Executive Director
2 S. Pacific, CL #4
Dillon, MT 59725
(406) 925-3645
keeleyfitz@hotmail.com***

SUPPORT STAFF & PROGRAMS

***Jill Anderson, Arena Events Secretary
Cody Brown, Arena Director
Jessica Murray, Beaverhead County Extension Agent
Shannon McWilliams, Beaverhead County Extension Secretary
Caleb Igo, Beaverhead County High School Vo-Ag and FFA Programs***

EXTENSION SERVICE AND 4-H CONTACT INFORMATION

***Beaverhead Co. Courthouse
2 S. Pacific, Dillon, MT 59725
4-H Phone: (406) 683-3785 or (406) 683-6836***

The 4-H Office will be located in the 4-H Exhibit Building Wednesday of Fair through Sunday.

IMPORTANT INFORMATION

Due to Covid 19 all Open Class Exhibits have been cancelled for 2020. Thanks for your understanding.

Due to Covid 19 vendors will not be allowed on the fairgrounds during 2020 fair related events. Thanks for your understanding.

Due to Covid 19 the carnival has been cancelled for 2020. Thanks for your understanding.

SCHEDULE OF EVENTS

(***4-H & FFA EVENTS**)

MONDAY, AUGUST 17

- 5:00 p.m. *Deadline to register all 4-H & FFA livestock exhibits for the fair
 *4-H Building Project entries due
 *Project Drop Deadline
 *Beef Weigh-In Activity Due
 * Livestock Quality Assurance Activity Due
 * Livestock Record Books Due
 * Livestock Photos Due

MONDAY, AUGUST 31

- 10:00 a.m. - 12:00 p.m. *4-H Project Interviews
2:00 p.m. – 7:00 p.m. *4-H Project Interviews

TUESDAY, SEPTEMBER 1

- 10:00 a.m. - 12:00 p.m. *4-H Project Interviews
2:00 p.m. – 7:00 p.m. *4-H Project Interviews

WEDNESDAY, SEPTEMBER 2

- 10:00 a.m. *4-H Poultry Show, 4-H Building (subject to change to Thursday depending on judge)
11:00 a.m. *4-H Rabbit Show, 4-H Building (subject to change to Thursday depending on judge)
1:00 p.m. *4-H Cat Show, 4-H Building

- 6:30 p.m. Beaverhead County Fair Open 4D Barrel Race

THURSDAY, SEPTEMBER 3

- 7:00 a.m. – 9:00 a.m. *Beef Weigh-In
10:00 a.m. *Market Beef Show & Showmanship
 *Breeding Beef Show following market/showmanship
2:00 p.m. – 3:00 p.m. *Sheep & Goat Weigh-In
4:00 p.m. *Market Goat Show
 *Market Sheep Show & Showmanship
 *Breeding Sheep Show following market/showmanship

- 7:00 p.m. Beaverhead County Fair Team Roping Jackpot, Harry Andrus Arena

FRIDAY, SEPTEMBER 4

- 6:00 a.m. – 9:00 a.m. *Hog Weigh-In
10:00 a.m. *Market Hog Show & Showmanship

- 8:00 a.m. Beaverhead County Fair Breakaway Team Roping, Harry Andrus Arena
10:00 a.m. Beaverhead County Fair Team Branding, Harry Andrus Arena
5:00 p.m. Beaverhead County Fair Ranch Rodeo, Harry Andrus Arena

SATURDAY, SEPTEMBER 5

- 10:00 a.m. *4-H & FFA Market Livestock Sale

- 7:30 p.m. Dillon Jaycees PRCA Rodeo, Harry Andrus Arena
(Tickets available online at www.dillonjaycees.com)

SUNDAY, SEPTEMBER 6

- 7:30 a.m. PRCA Slack
5:30 p.m. Dillon Jaycees PRCA Rodeo, Harry Andrus Arena
(Tickets available online at www.dillonjaycees.com)

MONDAY, SEPTEMBER 7

- 10:00 a.m. Dillon Jaycees Labor Day Parade (Entry forms available at www.dillonjaycees.com)

Montana's Biggest Weekend Highlights.....

Arena Events

Open 4D Barrel Race, Wednesday @ 6:30 p.m.

Team Roping Jackpot, Thursday @ 7 p.m.

Breakaway Team Roping, Friday @ 9 a.m.

Team Branding, Friday @ 11 a.m.

Ranch Rodeo, Friday @ 6 p.m.

4-H & FFA Livestock Shows

Market Beef, Thursday @ 10 a.m.

Market Sheep & Goat, Thursday @ 4 p.m.

Market Hog, Friday @ 10 a.m.

4-H & FFA Livestock Sale, Saturday @ 10 a.m.

Dillon Jaycees PRCA Rodeo

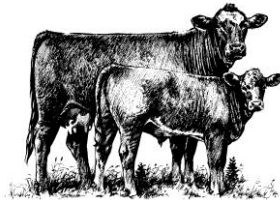
Performance Times

Saturday, September 5th at 7:30 p.m.

Sunday, September 6th at 5:30 p.m.

Tickets: www.dillonjaycees.com

BEAVERHEAD COUNTY FRIENDS OF THE FAIR FOUNDATION

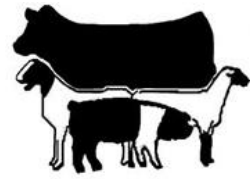
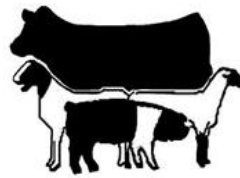
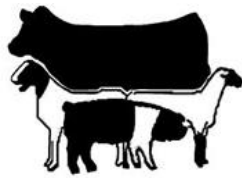


The Beaverhead County Friends of the Fair Foundation will be gladly accepting gifts and donations that will go directly to the improvement of the fairgrounds and facilities. Donations may be specifically earmarked.

Please contact 406-660-4452 for more information.

**THE BEAVERHEAD COUNTY FRIENDS OF THE FAIR FOUNDATION IS A
501(c)(3) NON-PROFIT ORGANIZATION.**

Thank You!



2019 Beaverhead County Fair 4-H & FFA Market Livestock Sale Buyers

Alltech Hubbard Feeds
American Equity Exchange, Max & Sheena Hansen
Arcadia Ag
Bank of Commerce
Bar Double T Ranch, Mark & Sandi Sloan
Barrett Hospital & Healthcare Physicians Clinic
Barretts Minerals
Beaverhead Home & Ranch, Chance Bernall
Beaverhead Glass
Beaverhead Meats
Beaverhead Motors & Beaverhead Motor Sports
Beaverhead Urgent Care
Beaverhead Veterinary Clinic
Judge Luke Berger
Greg Bervy
Bighole River Livestock
Big Tyme Sportswear
Todd & Konnie Bright
Big Sky Sports & Service
Browne's Bridge Vet Service
C2 Farming
Cottom Farms
Dillon Dental, Justin Rhodes
Dillon Disposal
Dillon Jaycees
Dillon Loomix
Divide Feed & Supply
Duffner Ranch
East Bench Grain
Edward Jones – Trent Cottom
El Taco Grande of Salmon, ID
Cherry Ellis
Jed C. Fitch, Beaverhead County Attorney
Frontline Ag
Garrison Ranches, Bill & Floydena Garrison
Hagenbarth Management
Craig Hansen Ranches
Harrington Pepsi
Helle Livestock

Iron Horse Fencing
JGN Law Office
Walt & Irene Jones
Jerry Wessels Tire Center
KDBM/KBEV
L&S Meats
LaCense Montana
M&M Outfitters, Monty & Edwina Hankinson
Jules & Bonnie Marchesseault
Allen & Yvonne Martinell
Lee Martinell Co.
Montana Livestock Auction
Mountainview Veterinary Services, Doug & Ellie Reedy
MSU Culinary Services
Murdoch's Ranch & Home Supply
Rich Nordquist
Northern Livestock Auction
Northwest Farm Credit Services
Osburn Fencing
Paddock Construction
Papa T's
Peterson Brothers Cattle Co.
Pioneer Federal Savings & Loan
Pita Pit
Pivots Plus
ProGenesis Embryo Transfer
Ranchland Packing
RE Miller & Sons
Rebush & Konen Livestock
Reinhardt Ranch
RMCH Investments
Rocky Mountain Supply
Ross Hansen Ranch
Safeway
Schuett Farms
Shepherd's Garage
Silo Meats
Jim & Tammi Sitz
Sitz Angus Ranch & Livestock



Smith 6-S Livestock
Southern MT Telephone
Stockman Bank
Subway of Salmon, ID
Andy & Peri Suenram
Tash Livestock
Taylor Realtors, Vana Taylor
Town & Country Foods
Toyne Angus
Turney Repair & Towing

Turner Ranch Properties
UMW Farm to College Program
Veterinary Hospital of Dillon
Vision Source, Dr. Douglas & Debbie Creger & Dr. John Creger
Whalen Tire
Beth Weatherby & Steve Kramer
Wilbur Ellis
Willow Ranch, Howard Varner
Wise River Mercantile

Thank You!



Thank You!



Thank You!

A SPECIAL THANKS TO OUR
RIBBON & ROSETTE SPONSORS:

George & Fran Schisler
Pioneer Federal Savings & Loan
Rocky Mountain Supply, Inc.
The Bank of Commerce
Stockman Bank
Forrester Livestock, LLC
Beaverhead Livestock Auction
Northwest Farm Credit Services
Andrew & Myrna Johnson
Jerry & Tammy Meine
Steve & Cathy Cottom
Greg & Keeley Fitzgerald

**Your continued support of the Beaverhead
County Fair is appreciated!**

CREATE ~ A ~ PICTURE VIRTUAL CONTEST

Boys and Girls Ages 3-12

Using crayons, markers, paint, etc., create a picture using the theme "Favorite Fair Memories." Entries must be submitted to keeleyfitz@hotmail.com by 5 p.m. on Wednesday, September 2. Please include your name, address, age, and phone number with your picture entry. All entries will be displayed on the Beaverhead County Fair Facebook Page during the Fair.

AGE DIVISIONS: 3-4, 5-6, 7-8, 9-10, 11-12

PRIZES: 1ST ~ \$10.00 2ND ~ \$5.00 3RD ~ \$3.00

****PRIZES AWARDED IN EACH AGE DIVISION****

This contest is held In Memory of Georgiana & Hans Andersen, sponsored by their families. This was sponsored by Georgiana for years and she always looked forward to seeing the many pictures on display in the Fair Office.



Beaverhead County Fair

Open 4D Barrel Race

Wednesday, September 2nd
Dillon, MT – Harry Andrus Arena

- \$500 ADDED MONEY
- \$100 ADDED MONEY IN THE YOUTH
- PRIZES
- UBRC SIDEPOTS
- NBHA CO-APPROVED



ENTRY FEES

\$37 OPEN

\$17 YOUTH (18 & UNDER)

\$5 PEE WEE (8 & UNDER)

TIME ONLY RUNS \$5 EACH OR 3/\$12

ENTRIES OPEN AT 4:00 P.M.

ENTRIES CLOSE AT 6:00 P.M.

TIME ONLY RUNS FROM 4:00-6:00 P.M.

YOUTH RUNS START AT 6:30 P.M. – OPEN TO FOLLOW

For more information call Crissie Hansen @ (406) 925-2550

Beaverhead County Fair

Team Roping

Jackpot

Thursday, September 3rd

Enter at 6 p.m. ~ Rope at 7 p.m.

Beaverhead County Fairgrounds

**#7 HANDICAPPED DRAW POT
3 HEAD PROGRESSIVE
ENTER UP TO 4 TIMES
\$25 PER ENTRY
WTRC NUMBERS**

**FOR MORE INFORMATION CALL
Jim Garrison at (406) 925-1939**



ALL PROCEEDS SUPPORT THE BEAVERHEAD COUNTY HIGH SCHOOL RODEO CLUB

BEAVERHEAD COUNTY FAIR

DILLON, MT – HARRY ANDRUS ARENA

BREAKAWAY TEAM ROPING

FRIDAY, SEPTEMBER 4TH AT 8:00 AM

(ENTRIES OPEN AT 7:00 AM IN COWBOY BOOTH)

- 2 person team—both headers
- 1 loop per person
- Person in header's box must rope first
- Person in heeler's box must rope second
- 1st loop must stay on calf until 2nd loop catches and breakaway flag clears horn and time stops
- No dallying
- Both loops must pass over calf's head then catch as catch can
- Person in heeler's box must have flag and breakaway string on their rope prior to run (string and flag provided)
- Enter 3 times (\$15/person or \$30/team)
- Must enter with different partners—no switching sides
- Time starts with electric eye barrier—10 second penalty for broken barrier
- Three calf average—progressive after one
- Rules will be explained and questions answered prior to event

FOR MORE INFORMATION OR TO PRE-ENTER CONTACT:

PETE HANSEN

406.865.0521

CASH ONLY



BEAVERHEAD COUNTY FAIR ***TEAM BRANDING***



FRIDAY, SEPTEMBER 4TH
10:00 A.M.

(ENTRIES OPEN AT 8:00 AM IN COWBOY BOOTH)

4 MAN TEAMS • BIG PAYOUTS

For more information or to pre-enter contact:
Jill Anderson at 406.490.3263

CASH ENTRIES ONLY FOR PAYOUT PURPOSES

Beaverhead County Fair

Dillon Ranch Rodeo

&

Women's Triathlon

Friday, September 4

5:00 p.m.

Dillon, MT

Beaverhead County Fairgrounds

Harry Andrus Arena



Enter @ (208)841-0141